

Fabricated, with Flange, Wetted Partes Made of Tantalum Model SD260F, SD360F and SW560F

WIKA Data Sheet TW 90.46

Applications

- Chemical engineering, process engineering, apparatus engineering
- For highest chemical loads
- For low and medium process loads

Special Features

- Wetted parts made of exotic material
- Non wetted parts (flange, connection parts) made of stainless steel
- Tantalum cover removeable

Description

Material

Tantalum (cover)
Thermowell made of 316 Ti (1.4571)

Nominal diameter

to EN/DIN: DN 25, DN 40, DN 50
to ASME: 1", 1½", 2"

Pressure rating

to EN/DIN: PN 16-40
to ASME: 150 lbs, 300 lbs, 600 lbs

Instrument connection

SD260F, SD360F: running nut M24 x 1.5
SW560F: G ½ female, ½ NPT female

Tantalum cover / bore dimensions

SD260F, SW560F:
OD 12 mm with 0,4 mm sheet thickness for bore 7 mm
OD 16 mm with 0,4 mm sheet thickness for bore 9 mm
SD360F:
OD 13 mm with 0,4 mm sheet thickness for bore 6.1 mm

Insertion length U_1

100, 160, 200, 250, 300, 400, 500 mm



Thermowell with flange, wetted partes made of tantalum
Model SW560F

Total length L

SD260F: Insertion length U_1 + extension neck length M
SD360F: Insertion length U_1 + extension neck length M
SW560F: Insertion length U_1 + Connection length T

Maximum process temperature ¹⁾

200 °C for thermowell material tantalum / 1.4571

Maximum process pressure (static) ¹⁾

depend on pressure rating of flange

1) Ratings depends on below parameters:

- Process medium
- Process pressure and temperature
- Flow rate
- Design of thermowell (dimensions, material)

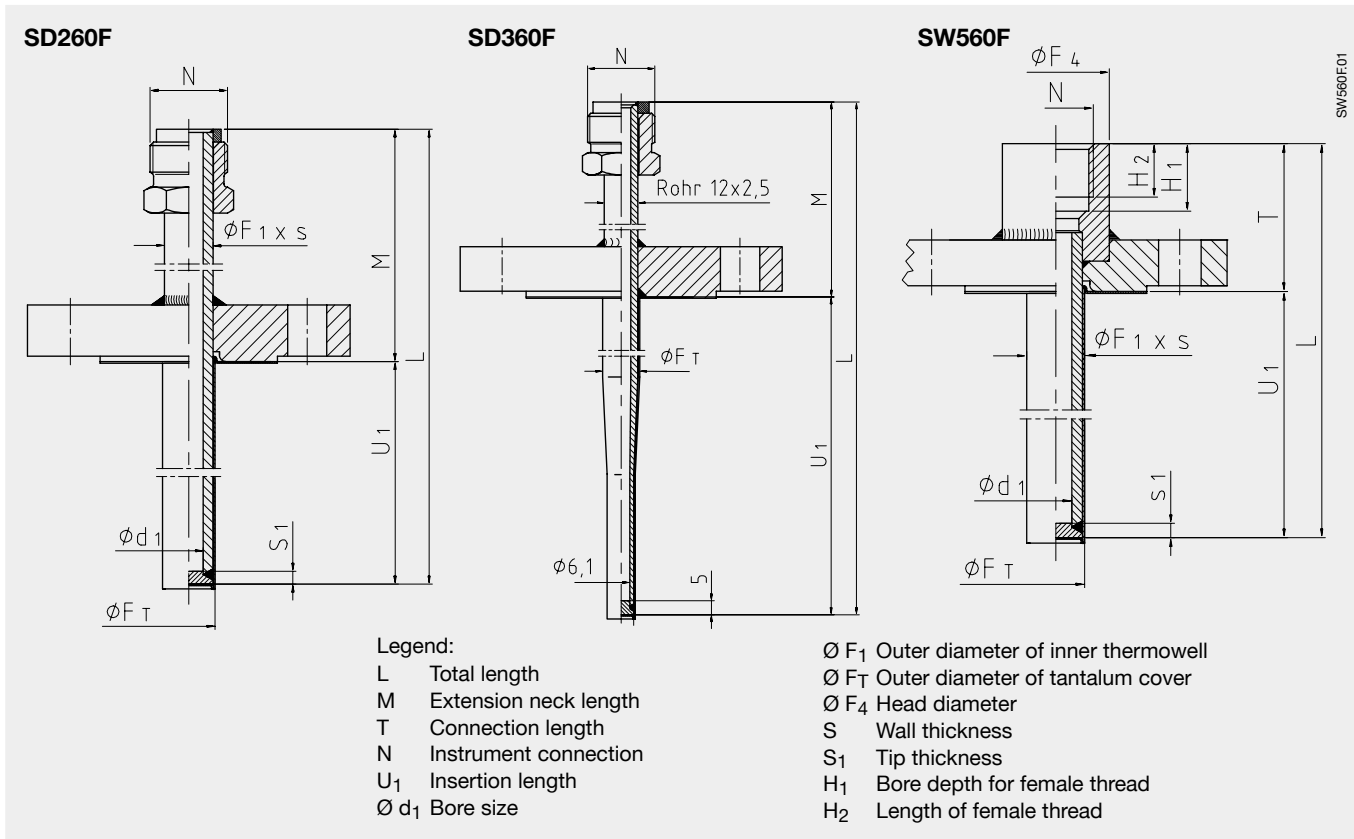
Optional extras

- Other dimensions and materials
- Quality certificates
- Wake frequency calculations according to Dittrich / Klotter are recommended in critical applications. WIKA offer this as an engineering service.

Following process data are necessary for the calculation:

- Process pressure (in bar or psi)
- Process temperature (in °C or °F)
- Flow rate (in m/s)
- Density (in kg/m³)
- Dimensions and material of thermowell

Dimensions in mm



Model	Dimensions in mm									
	N	Ø F _T	Ø d ₁	Ø F ₁ x S	S ₁	M	T	H ₁	H ₂	Ø F ₄
SD260F	M24x1.5	12x0.4	7	11x2	2.5	80	-	-	-	-
SD260F	M24x1.5	16x0.4	9	15x3	3.5	80	-	-	-	-
SD360F	M24x1.5	13x0.4	6.1	12x2.5	5	82	-	-	-	-
SW560F	G ½, ½ NPT	12x0.4	7	11x2	2.5	-	45	19	15	30
SW560F	G ½, ½ NPT	16x0.4	9	15x3	3.5	-	45	19	15	30

Ordering information

Model / Flange / Instrument connection / Bore size / Insertion length U₁ / Optional extras required

Modifications may take place and materials specified may be replaced by others without prior notice. Specifications and dimensions given in this leaflet represent the state of engineering at the time of printing.



WIKAL Alexander Wiegand GmbH & Co. KG
 Alexander-Wiegand-Straße 30
 63911 Klingenberg/Germany
 Phone (+49) 93 72/132-0
 Fax (+49) 93 72/132-406
 E-Mail info@wika.de
 www.wika.de